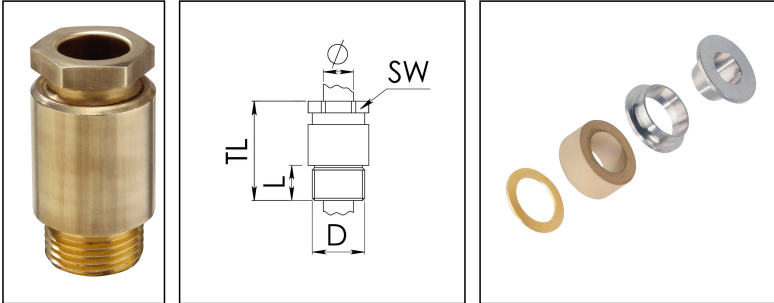


KVM 24-Z16

Cable gland, brass, DIN 89280, M24



Product illustrations are exemplary and may differ from the chosen product. Further variants and individual customization, we will gladly provide you on request.



| | |
|--------------------------|-----------------------|
| Material cable gland | Brass |
| Material sealing gasket | EPDM |
| Material earthing insert | Brass chromium-plated |
| Temp. range min | -40 °C |
| Temp. range max | 100 °C |
| Protection class | IP54 |
| Thread type | M |
| Ø Connection thread D | 24 |
| Lead | 1,5 |
| Length screw-in thread L | 11 mm |
| Ø cable diameter min | 14 mm |
| Ø cable diameter max | 16,5 mm |
| Key width SW | 24 mm |
| Collar diameter (E) | 27 mm |
| Total length TL | 49 mm |
| Install. torques fitting | 10 N m |
| Install. torques cap nut | 10 N m |
| Impact category | 6 |
| Surface | Bright |
| Order no. bright | 10010841 |
| Type | KVM 24-Z16 |
| Packing unit | 1 |
| ETIM-Classification | EC000441 |

Your Contact:

WISKA Hoppmann GmbH

Kisdorfer Weg 28 · 24568 Kaltenkirchen · Germany

☎ +49-4191-508-0 · 📠 +49-4191-508-209

contact@wiska.de · www.wiska.com

Recommended accessories

GM 24

50011420

15.08.2018

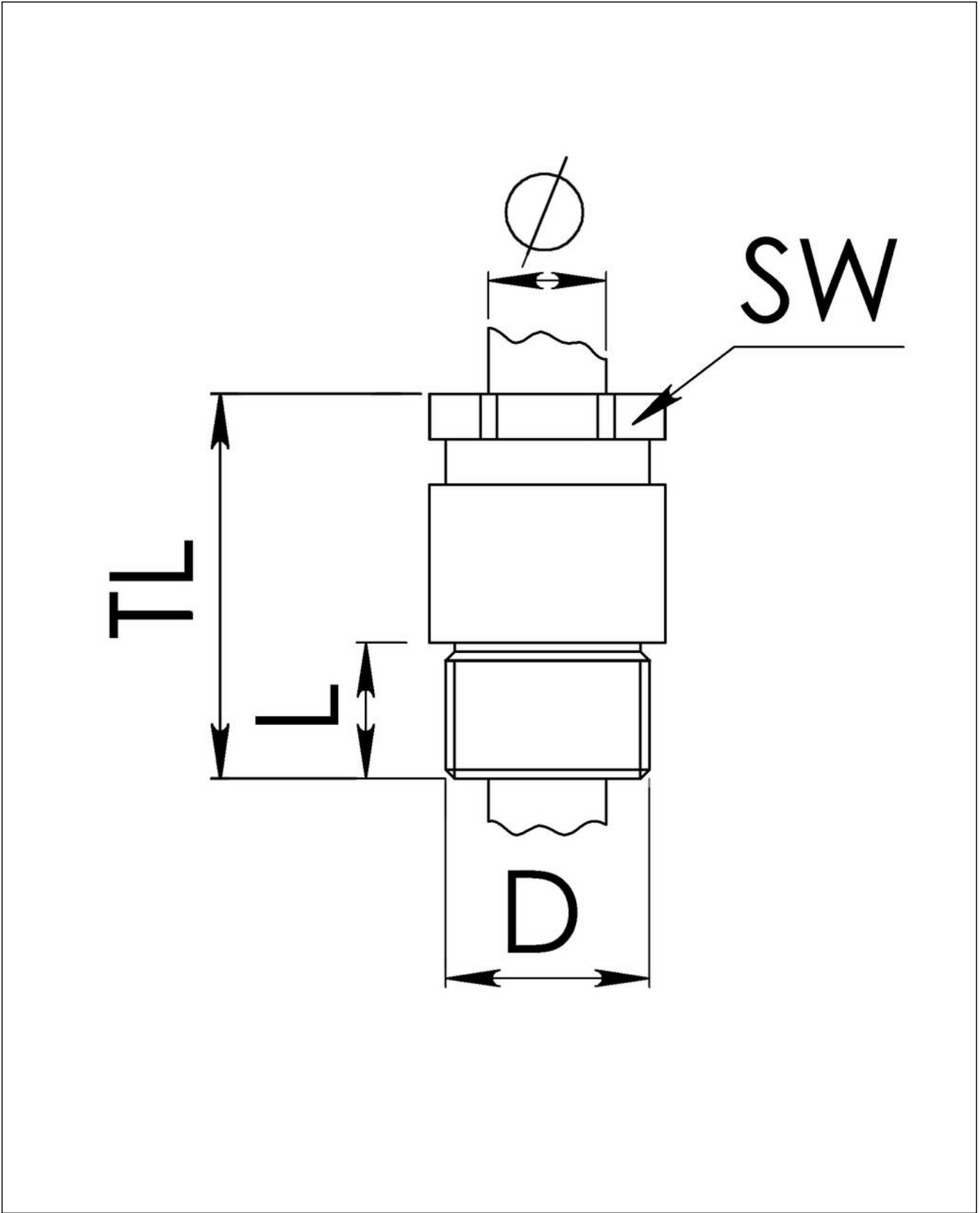
Your Contact:

WISKA Hoppmann GmbH

Kisdorfer Weg 28 · 24568 Kaltenkirchen · Germany

☎ +49-4191-508-0 · 📠 +49-4191-508-209

contact@wiska.de · www.wiska.com



Your Contact:
WISKA Hoppmann GmbH
Kisdorfer Weg 28 · 24568 Kaltenkirchen · Germany
☎ +49-4191-508-0 · 📠 +49-4191-508-209
contact@wiska.de · www.wiska.com