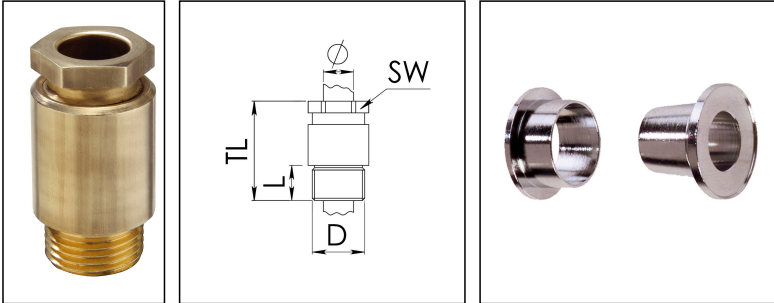


## KVM 18-VG B

Cable gland, DIN 89280, brass, earthing cones to VG 88773, M18



Product illustrations are exemplary and may differ from the chosen product. Further variants and individual customization, we will gladly provide you on request.



<b>Material cable gland</b>	Brass
<b>Material earthing insert</b>	Brass chromium-plated
<b>Temp. range min</b>	-30 °C
<b>Temp. range max</b>	80 °C
<b>Protection class</b>	IP30
<b>Thread type</b>	M
<b>Ø Connection thread D</b>	18
<b>Lead</b>	1,5
<b>Length screw-in thread L</b>	10 mm
<b>Ø cable below cable shield</b>	11,5 mm - 12,5 mm
<b>Key width SW</b>	19 mm
<b>Collar diameter (E)</b>	22 mm
<b>Total length TL</b>	43 mm
<b>Install. torques fitting</b>	10 N m
<b>Install. torques cap nut</b>	10 N m
<b>Surface</b>	Bright
<b>Order no. bright</b>	10010895
<b>Type</b>	KVM 18-VG B
<b>Packing unit</b>	1

17.08.2018

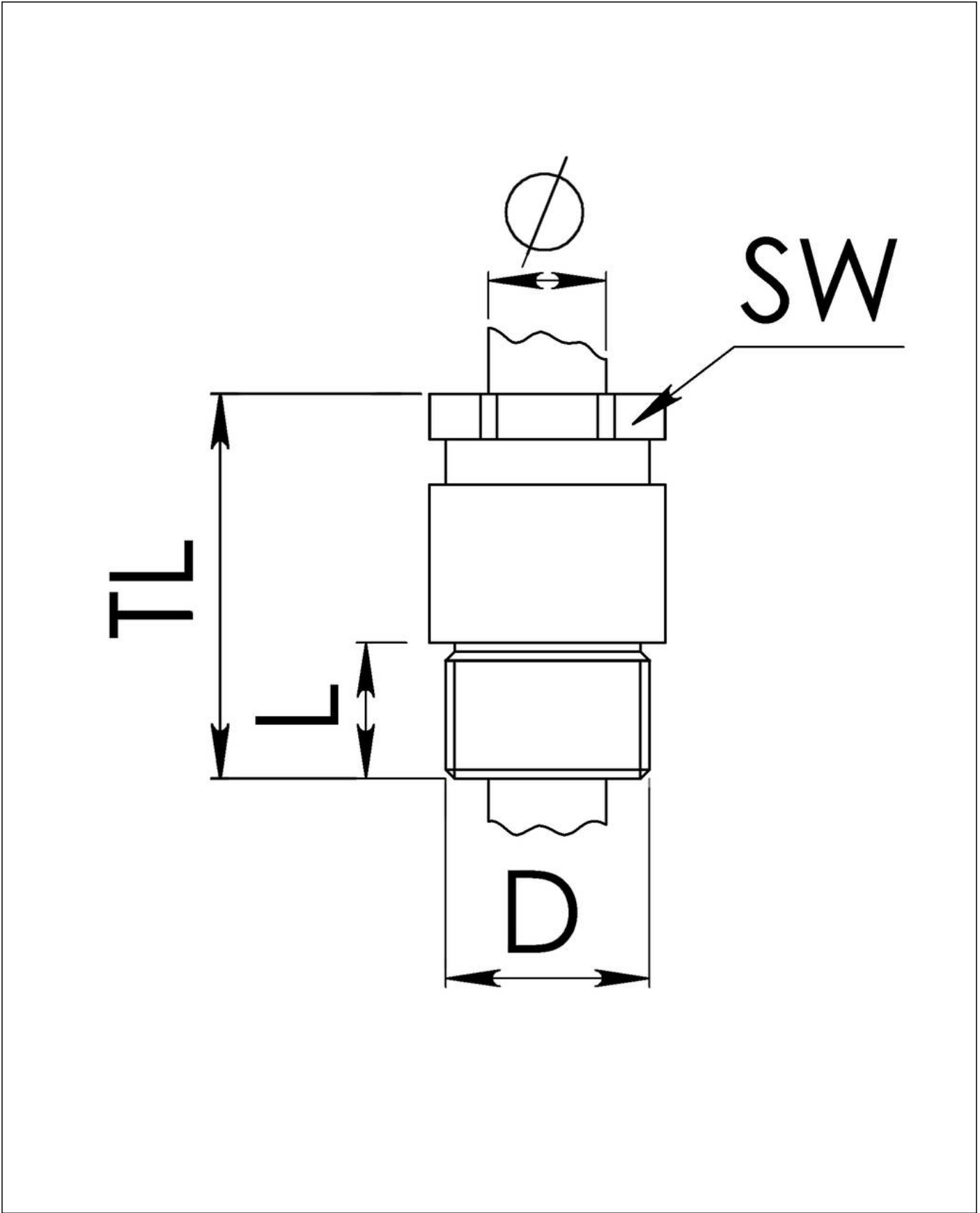
Your Contact:

**WISKA Hoppmann GmbH**

Kisdorfer Weg 28 · 24568 Kaltenkirchen · Germany

☎ +49-4191-508-0 · 📠 +49-4191-508-209

contact@wiska.de · www.wiska.com



Your Contact:  
**WISKA Hoppmann GmbH**  
Kisdorfer Weg 28 · 24568 Kaltenkirchen · Germany  
☎ +49-4191-508-0 · 📠 +49-4191-508-209  
contact@wiska.de · www.wiska.com