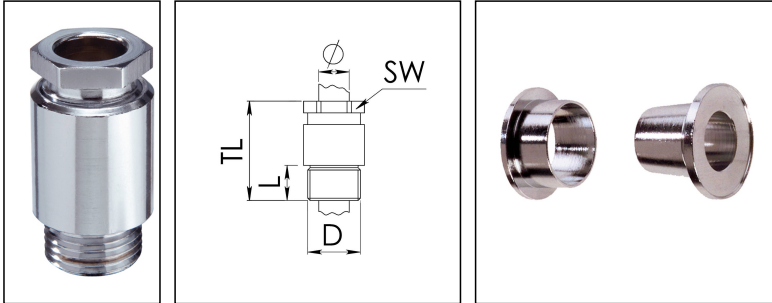


## KVM 24-VG C / Cr

Cable gland, DIN 89280, brass chromed-plated, earthing cones to VG 88773, M24



Product illustrations are exemplary and may differ from the chosen product. Further variants and individual customization, we will gladly provide you on request.



<b>Material cable gland</b>	Brass chromium-plated
<b>Material earthing insert</b>	Brass chromium-plated
<b>Temp. range min</b>	-30 °C
<b>Temp. range max</b>	80 °C
<b>Protection class</b>	IP30
<b>Thread type</b>	M
<b>Ø Connection thread D</b>	24
<b>Lead</b>	1,5
<b>Length screw-in thread L</b>	11 mm
<b>Ø cable below cable shield</b>	13,5 mm - 16,5 mm
<b>Key width SW</b>	24 mm
<b>Collar diameter (E)</b>	27 mm
<b>Total length TL</b>	49 mm
<b>Install. torques fitting</b>	10 N m
<b>Install. torques cap nut</b>	10 N m
<b>Surface</b>	Chromium-plated
<b>Order no. chrome-plated</b>	10014214
<b>Type</b>	KVM 24-VG C / Cr
<b>Packing unit</b>	1

16.11.2018

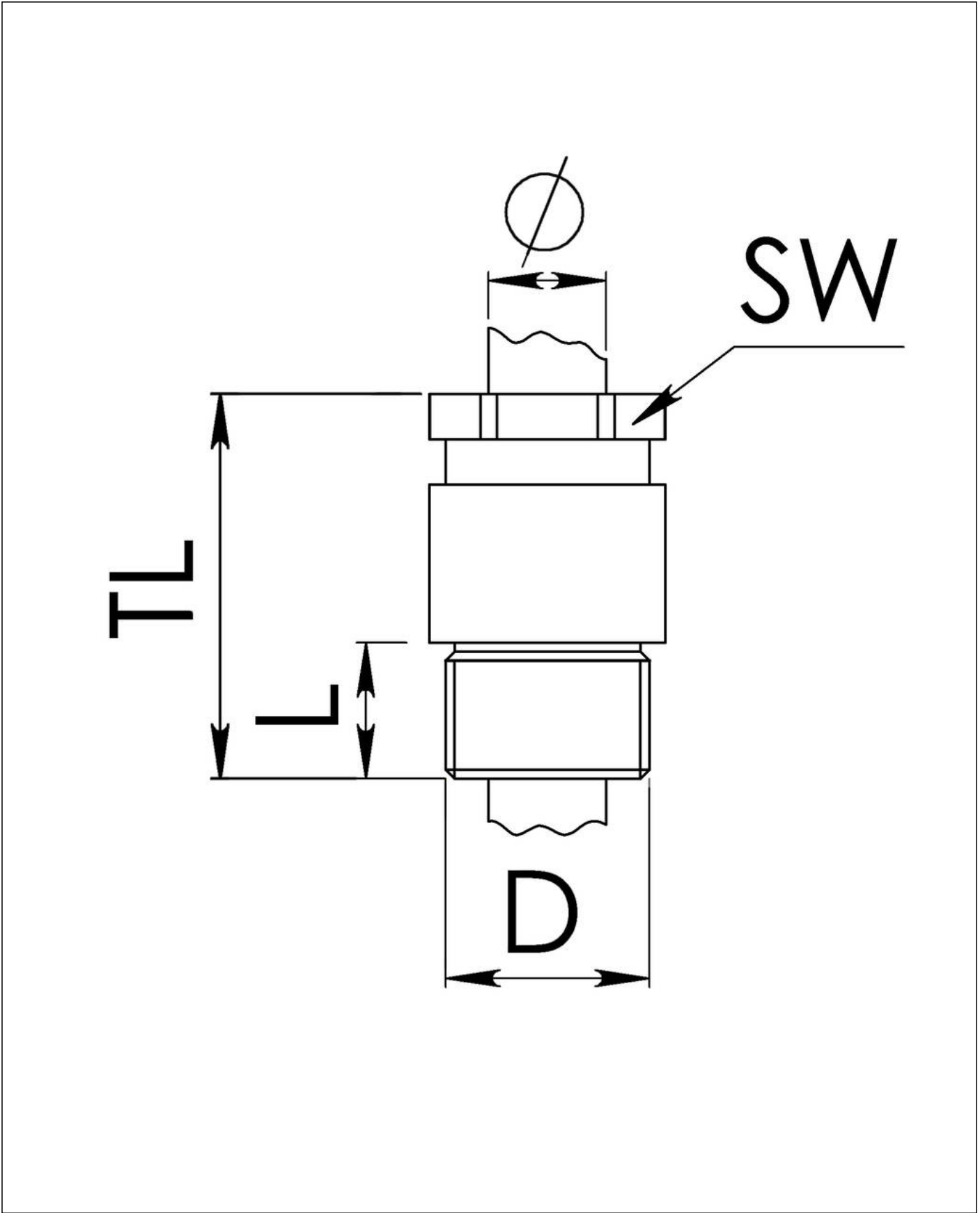
Your Contact:

**WISKA Hoppmann GmbH**

Kisdorfer Weg 28 · 24568 Kaltenkirchen · Germany

☎ +49-4191-508-0 · 📠 +49-4191-508-209

contact@wiska.de · www.wiska.com



Your Contact:  
**WISKA Hoppmann GmbH**  
Kisdorfer Weg 28 · 24568 Kaltenkirchen · Germany  
☎ +49-4191-508-0 · 📠 +49-4191-508-209  
contact@wiska.de · www.wiska.com