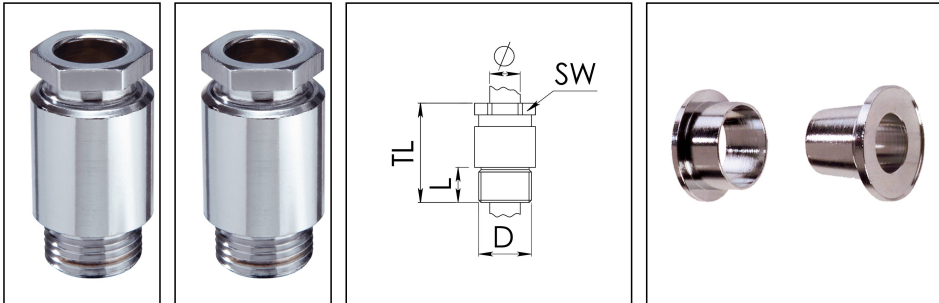


KVM 45-VG A / Cr

Cable gland, DIN 89280, brass chromed-plated, earthing cones to VG 88773, M45



Product illustrations are exemplary and may differ from the chosen product. Further variants and individual customization, we will gladly provide you on request.



| | |
|-----------------------------------|-----------------------|
| Material cable gland | Brass chromium-plated |
| Material earthing insert | Brass chromium-plated |
| Temp. range min | -30 °C |
| Temp. range max | 80 °C |
| Protection class | IP30 |
| Thread type | M |
| Ø Connection thread D | 45 |
| Lead | 2 |
| Length screw-in thread L | 14 mm |
| Ø cable below cable shield | 25,5 mm - 27,5 mm |
| Key width SW | 46 mm |
| Collar diameter (E) | 50 mm |
| Total length TL | 62 mm |
| Install. torques fitting | 20 N m |
| Install. torques cap nut | 15 N m |
| Surface | Chromium-plated |
| Order no. chrome-plated | 10014340 |
| Type | KVM 45-VG A / Cr |
| Packing unit | 1 |

17.08.2018

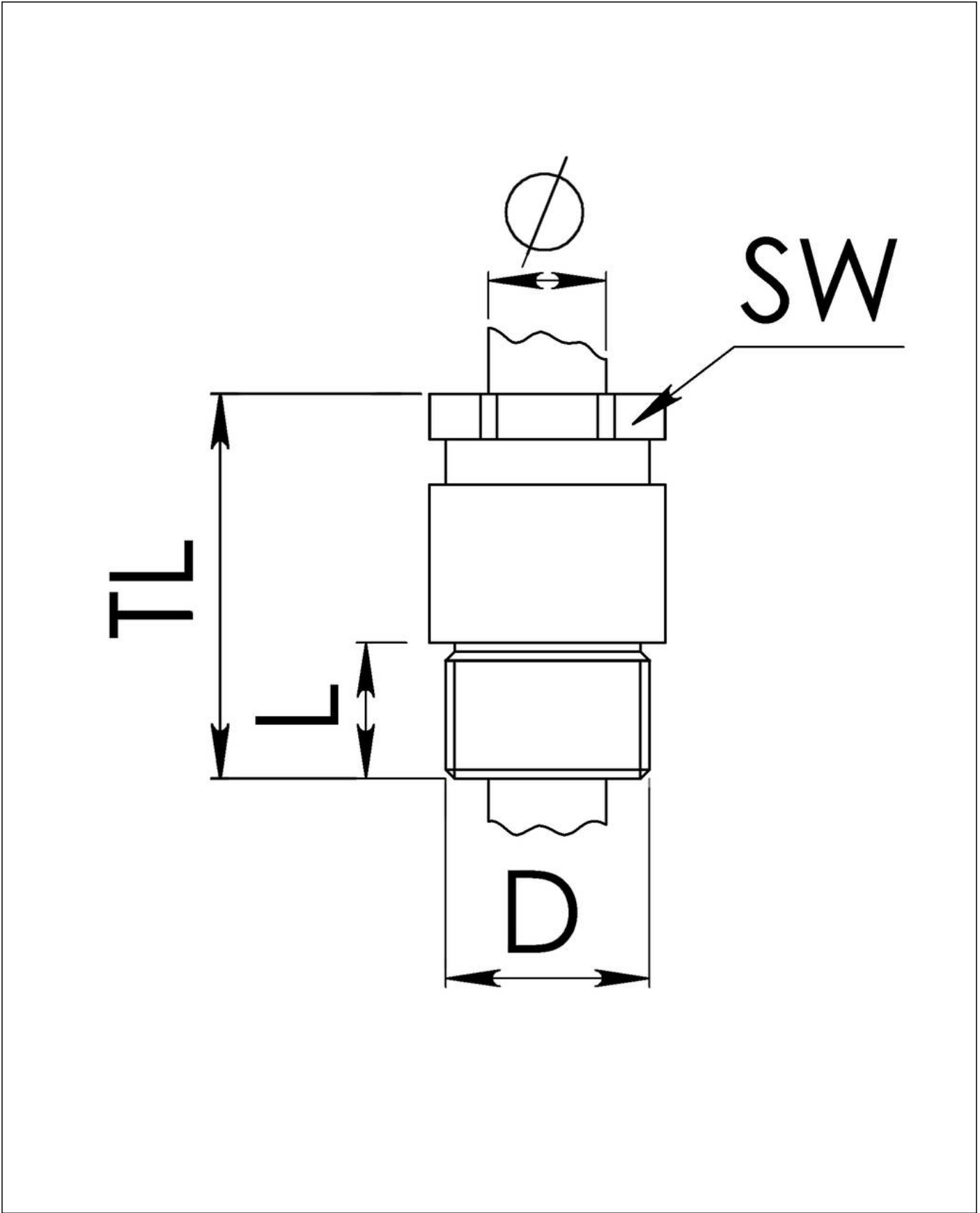
Your Contact:

WISKA Hoppmann GmbH

Kisdorfer Weg 28 · 24568 Kaltenkirchen · Germany

☎ +49-4191-508-0 · 📠 +49-4191-508-209

contact@wiska.de · www.wiska.com



Your Contact:
WISKA Hoppmann GmbH
Kisdorfer Weg 28 · 24568 Kaltenkirchen · Germany
☎ +49-4191-508-0 · 📠 +49-4191-508-209
contact@wiska.de · www.wiska.com