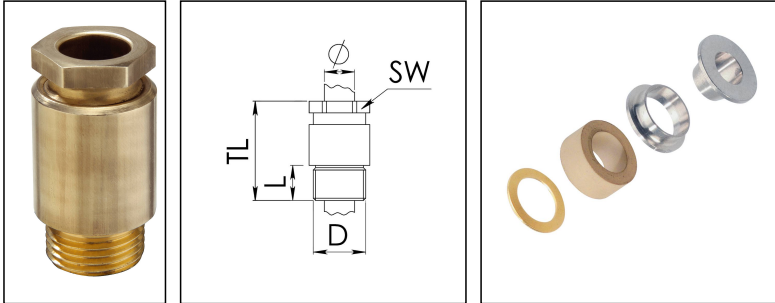


## KVM 72-Z56

Cable gland, brass, DIN 89280, M72



Product illustrations are exemplary and may differ from the chosen product. Further variants and individual customization, we will gladly provide you on request.



<b>Material cable gland</b>	Brass
<b>Material sealing gasket</b>	EPDM
<b>Material earthing insert</b>	Brass chromium-plated
<b>Temp. range min</b>	-40 °C
<b>Temp. range max</b>	100 °C
<b>Protection class</b>	IP54
<b>Thread type</b>	M
<b>Ø Connection thread D</b>	72
<b>Lead</b>	2
<b>Length screw-in thread L</b>	16 mm
<b>Ø cable diameter min</b>	54 mm
<b>Ø cable diameter max</b>	56,5 mm
<b>Key width SW</b>	70 mm
<b>Collar diameter (E)</b>	75 mm
<b>Total length TL</b>	73 mm
<b>Install. torques fitting</b>	20 N m
<b>Install. torques cap nut</b>	15 N m
<b>Impact category</b>	6
<b>Surface</b>	Bright
<b>Order no. bright</b>	10014379
<b>Type</b>	KVM 72-Z56
<b>Packing unit</b>	1

16.08.2018

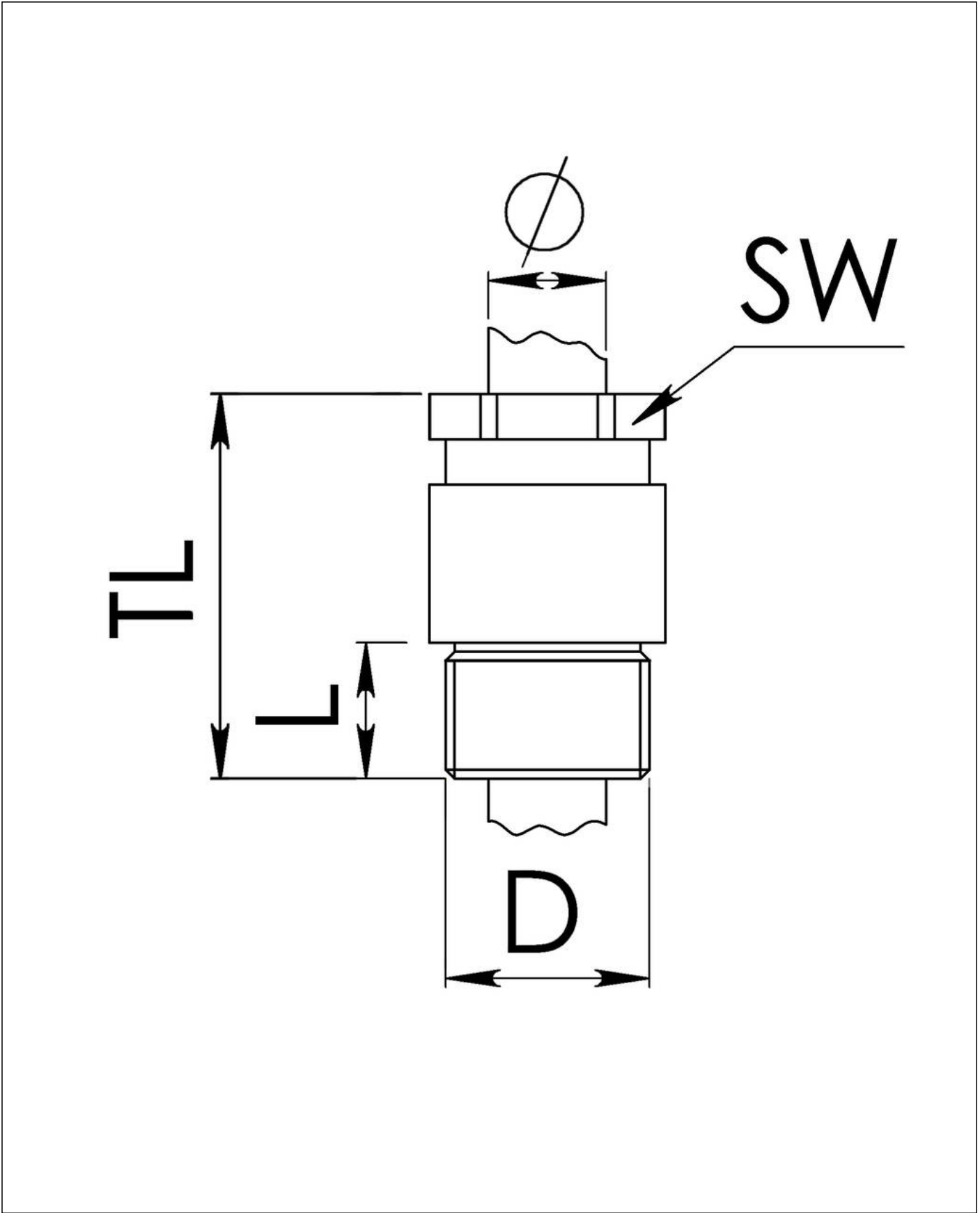
Your Contact:

**WISKA Hoppmann GmbH**

Kisdorfer Weg 28 · 24568 Kaltenkirchen · Germany

☎ +49-4191-508-0 · 📠 +49-4191-508-209

contact@wiska.de · www.wiska.com



Your Contact:  
**WISKA Hoppmann GmbH**  
Kisdorfer Weg 28 · 24568 Kaltenkirchen · Germany  
☎ +49-4191-508-0 · 📠 +49-4191-508-209  
contact@wiska.de · www.wiska.com