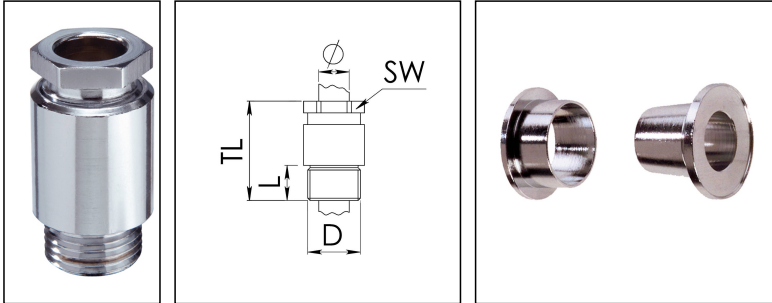


KVM 18-VG B / Cr

Cable gland, DIN 89280, brass chromed-plated, earthing cones to VG 88773, M18



Product illustrations are exemplary and may differ from the chosen product. Further variants and individual customization, we will gladly provide you on request.



Material cable gland	Brass chromium-plated
Material earthing insert	Brass chromium-plated
Temp. range min	-30 °C
Temp. range max	80 °C
Protection class	IP30
Thread type	M
Ø Connection thread D	18
Lead	1,5
Length screw-in thread L	10 mm
Ø cable below cable shield	11,5 mm - 12,5 mm
Key width SW	19 mm
Collar diameter (E)	22 mm
Total length TL	43 mm
Install. torques fitting	10 N m
Install. torques cap nut	10 N m
Surface	Chromium-plated
Order no. chrome-plated	10014444
Type	KVM 18-VG B / Cr
Packing unit	1

18.08.2018

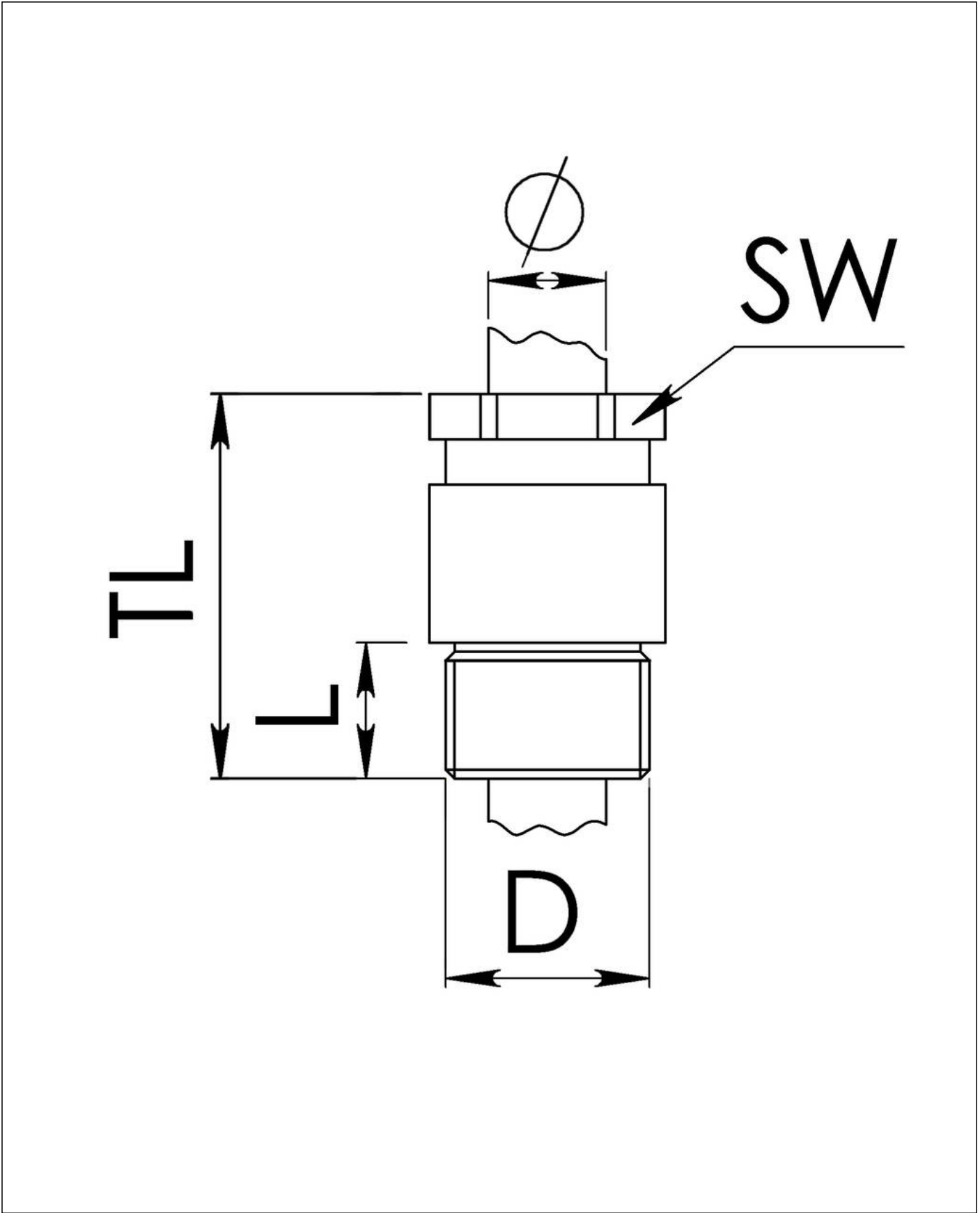
Your Contact:

WISKA Hoppmann GmbH

Kisdorfer Weg 28 · 24568 Kaltenkirchen · Germany

☎ +49-4191-508-0 · 📠 +49-4191-508-209

contact@wiska.de · www.wiska.com



Your Contact:
WISKA Hoppmann GmbH
Kisdorfer Weg 28 · 24568 Kaltenkirchen · Germany
☎ +49-4191-508-0 · 📠 +49-4191-508-209
contact@wiska.de · www.wiska.com