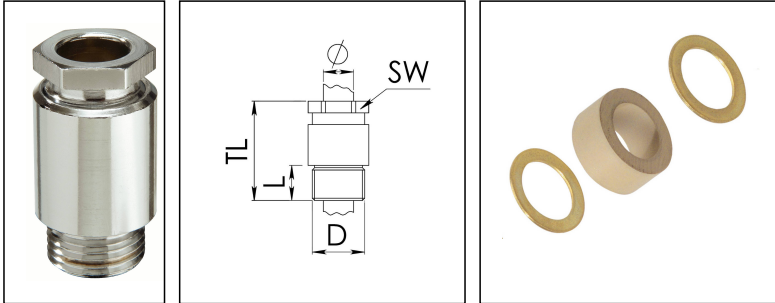


KVM 105-W70/Ni

Cable gland, brass nickel-plated, similar to DIN 89280, M105



Products may differ in size, colour and appearance to those shown. If you require further information or customisation, please contact us directly.



Material cable gland	Brass nickel-plated
Material sealing gasket	EPDM
Temp. range min	-40 °C
Temp. range max	100 °C
Protection class	IP54
Thread type	M
Ø Connection thread D	105
Lead	2
Length screw-in thread L	20 mm
Ø cable diameter min	68 mm
Ø cable diameter max	73 mm
Key width SW	105 mm
Collar diameter (E)	113 mm
Total length TL	88 mm
Install. torques fitting	30 N m
Install. torques cap nut	30 N m
Advice	* Similar to DIN 89280
Surface	Nickel-plated
Order no. nickel-plated	10014607
Type	KVM 105-W70/Ni
Packing unit	1
Tariff number	85369010
EAN number	4007685146074
ETIM-Classification	EC000441

Your Contact:

WISKA Hoppmann GmbH

Kisdorfer Weg 28 · 24568 Kaltenkirchen · Germany

☎ +49-4191-508-0 · 📠 +49-4191-508-209

contact@wiska.de · www.wiska.com

Recommended accessories

GM 105/Ni

10011708

21.06.2024

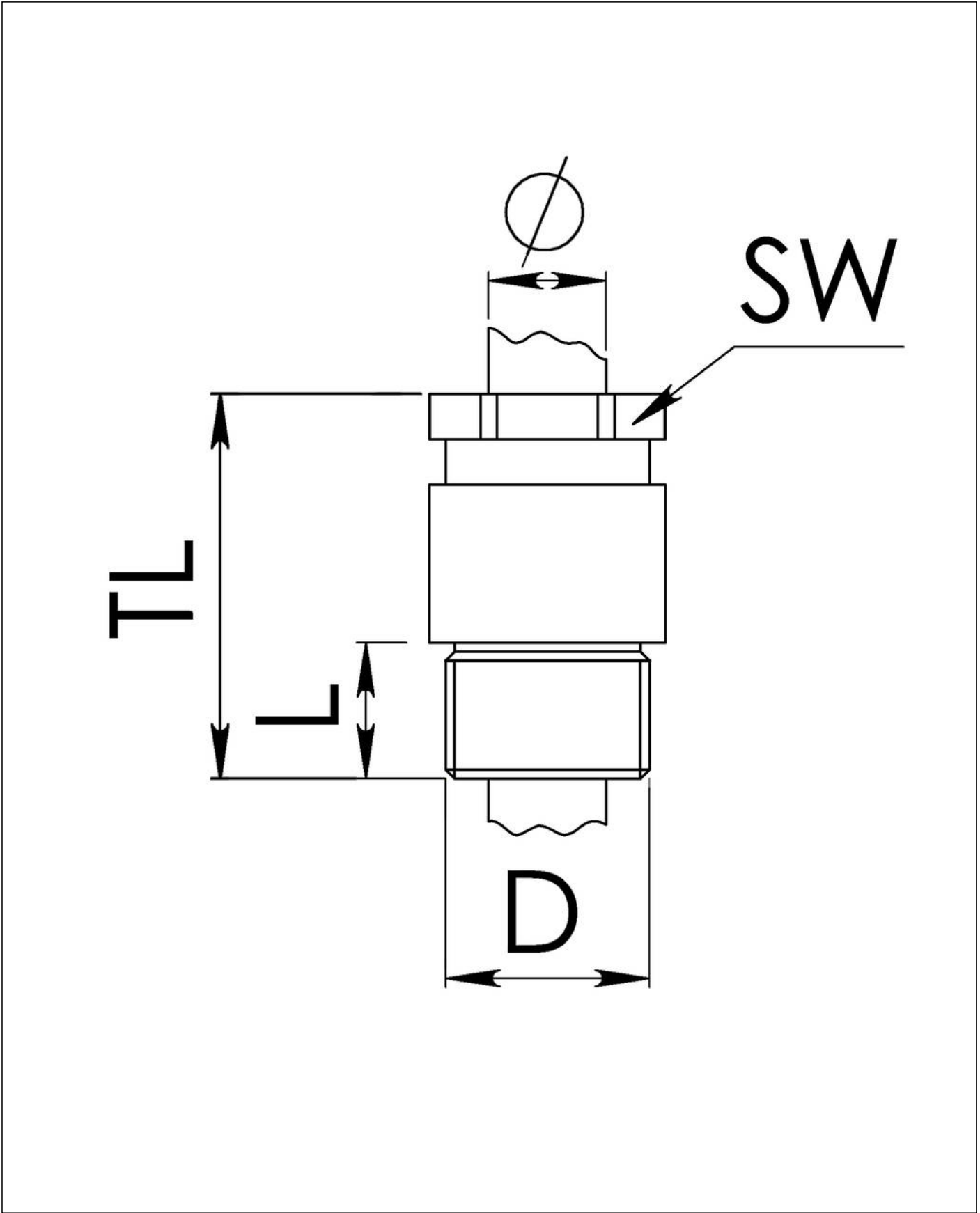
Your Contact:

WISKA Hoppmann GmbH

Kisdorfer Weg 28 · 24568 Kaltenkirchen · Germany

☎ +49-4191-508-0 · 📠 +49-4191-508-209

contact@wiska.de · www.wiska.com



Your Contact:
WISKA Hoppmann GmbH
Kisdorfer Weg 28 · 24568 Kaltenkirchen · Germany
☎ +49-4191-508-0 · 📠 +49-4191-508-209
contact@wiska.de · www.wiska.com