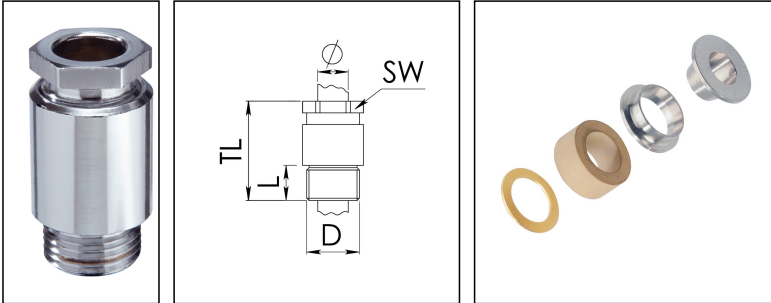


KVM 80-Z61/Cr

Cable gland, brass chromed-plated, DIN 89280, M80



Product illustrations are exemplary and may differ from the chosen product. Further variants and individual customization, we will gladly provide you on request.



Material cable gland	Brass chromium-plated
Material sealing gasket	EPDM
Material earthing insert	Brass chromium-plated
Temp. range min	-40 °C
Temp. range max	100 °C
Protection class	IP54
Thread type	M
Ø Connection thread D	80
Lead	2
Length screw-in thread L	18 mm
Ø cable diameter min	59 mm
Ø cable diameter max	62 mm
Key width SW	85 mm
Collar diameter (E)	91 mm
Total length TL	79 mm
Install. torques fitting	30 N m
Install. torques cap nut	30 N m
Advice	* Similar to DIN 89280
Surface	Chromium-plated
Order no. chrome-plated	10016581
Type	KVM 80-Z61/Cr
Packing unit	1
ETIM-Classification	EC000441

Your Contact:

WISKA Hoppmann GmbH

Kisdorfer Weg 28 · 24568 Kaltenkirchen · Germany

☎ +49-4191-508-0 · 📠 +49-4191-508-209

contact@wiska.de · www.wiska.com

Recommended accessories

GM 80/Cr

10011858

18.11.2018

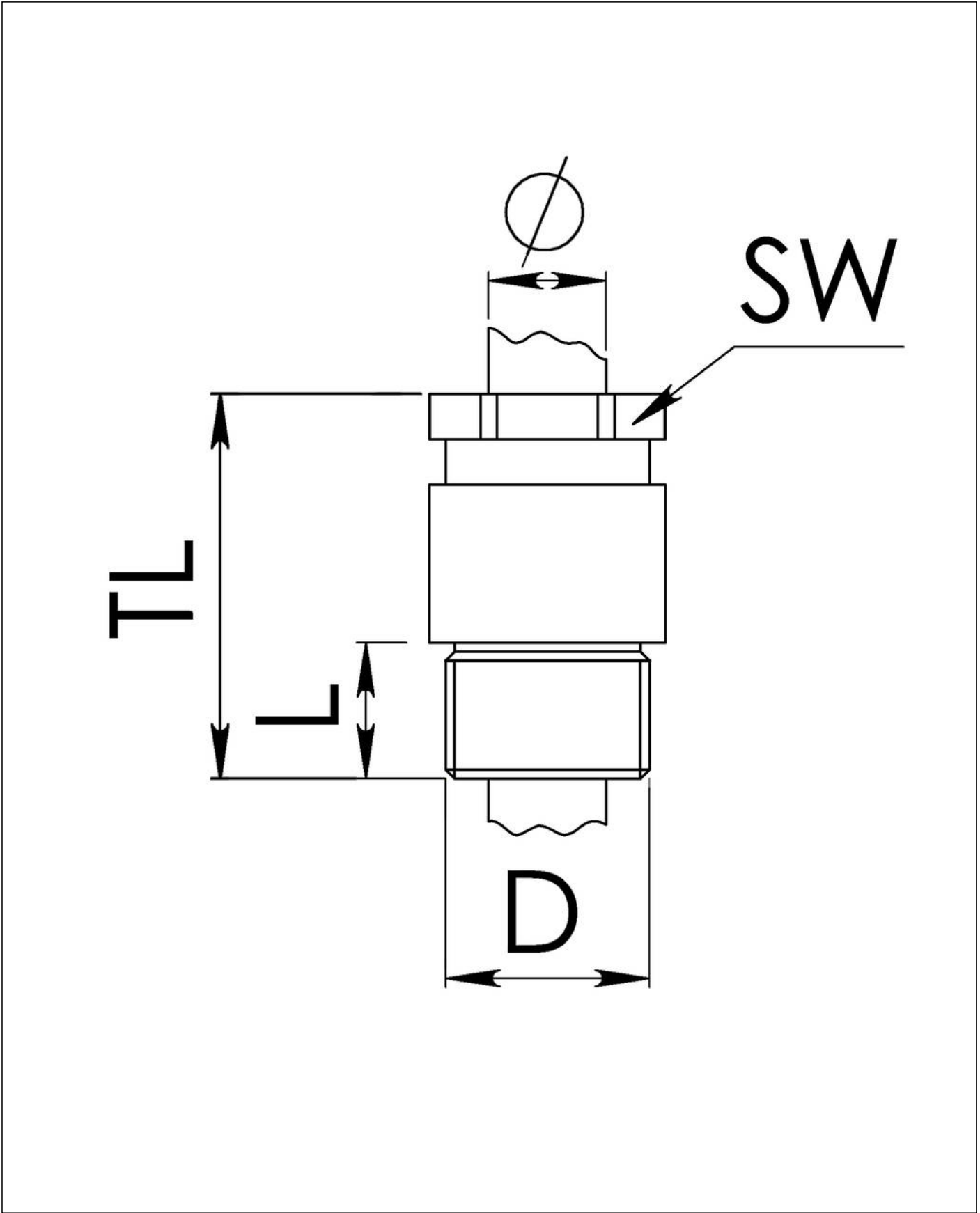
Your Contact:

WISKA Hoppmann GmbH

Kisdorfer Weg 28 · 24568 Kaltenkirchen · Germany

☎ +49-4191-508-0 · 📠 +49-4191-508-209

contact@wiska.de · www.wiska.com



Your Contact:
WISKA Hoppmann GmbH
Kisdorfer Weg 28 · 24568 Kaltenkirchen · Germany
☎ +49-4191-508-0 · 📠 +49-4191-508-209
contact@wiska.de · www.wiska.com