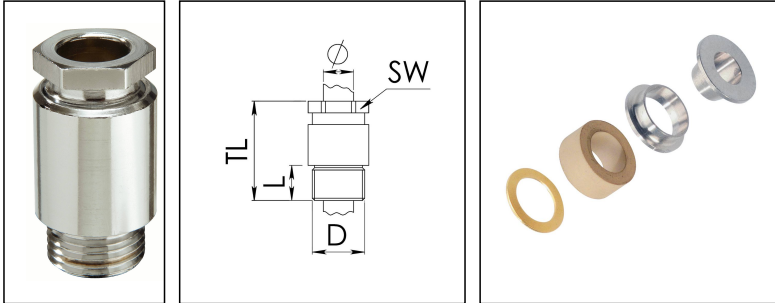


KVM 80-Z61/Ni

Cable gland, brass nickel-plated, DIN 89280, M80



Product illustrations are exemplary and may differ from the chosen product. Further variants and individual customization, we will gladly provide you on request.



| | |
|--------------------------|------------------------|
| Material cable gland | Brass nickel-plated |
| Material sealing gasket | EPDM |
| Material earthing insert | Brass chromium-plated |
| Temp. range min | -40 °C |
| Temp. range max | 100 °C |
| Protection class | IP54 |
| Thread type | M |
| Ø Connection thread D | 80 |
| Lead | 2 |
| Length screw-in thread L | 18 mm |
| Ø cable diameter min | 59 mm |
| Ø cable diameter max | 62 mm |
| Key width SW | 85 mm |
| Collar diameter (E) | 91 mm |
| Total length TL | 79 mm |
| Install. torques fitting | 30 N m |
| Install. torques cap nut | 30 N m |
| Impact category | 6 |
| Advice | * Similar to DIN 89280 |
| Surface | Nickel-plated |
| Order no. nickel-plated | 10101672 |
| Type | KVM 80-Z61/Ni |
| Packing unit | 1 |

Your Contact:

WISKA Hoppmann GmbH

Kisdorfer Weg 28 · 24568 Kaltenkirchen · Germany

☎ +49-4191-508-0 · 📠 +49-4191-508-209

contact@wiska.de · www.wiska.com

Recommended accessories

GM 80/Ni



10014199

16.11.2018

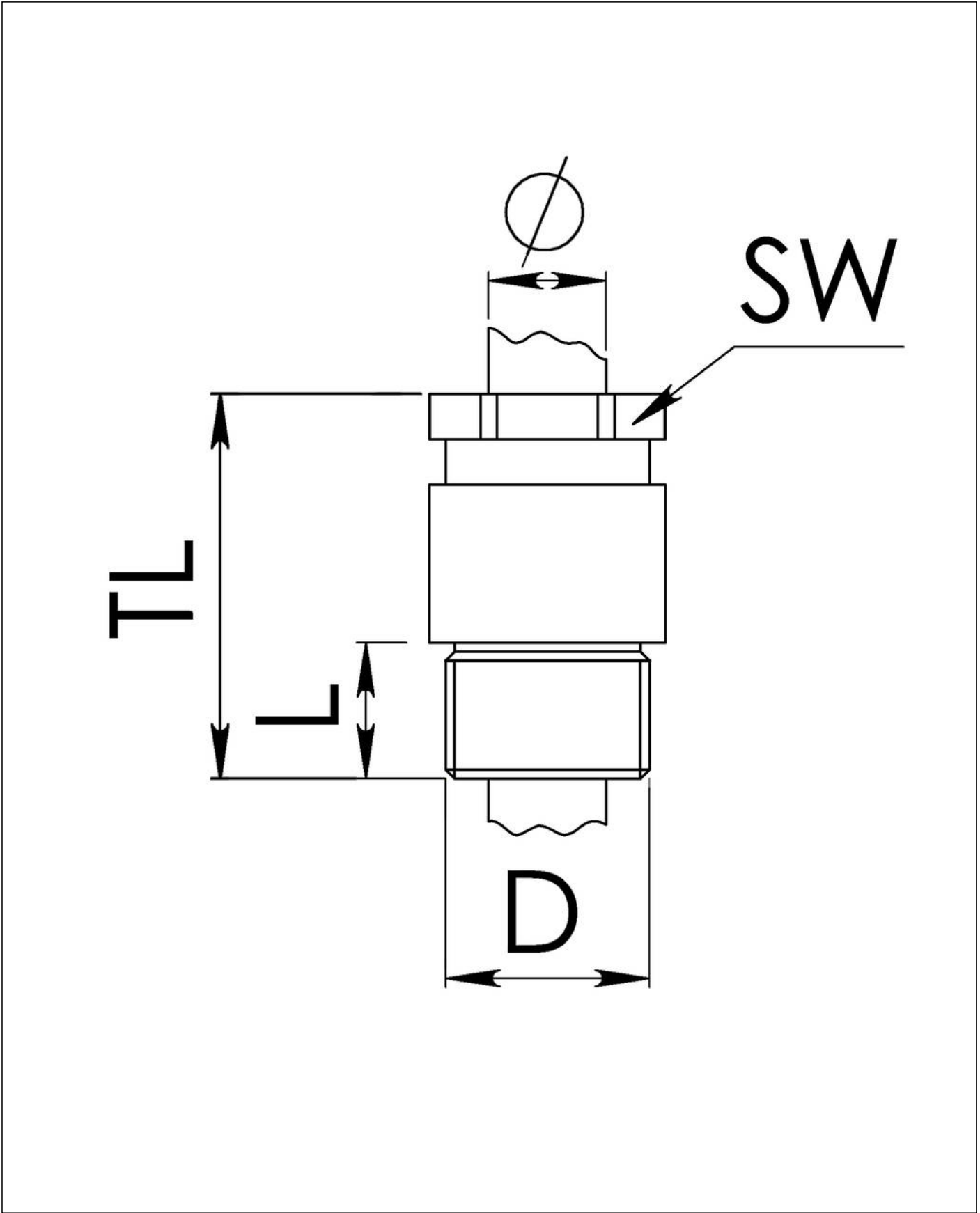
Your Contact:

WISKA Hoppmann GmbH

Kisdorfer Weg 28 · 24568 Kaltenkirchen · Germany

 +49-4191-508-0 ·  +49-4191-508-209

contact@wiska.de · www.wiska.com



Your Contact:
WISKA Hoppmann GmbH
Kisdorfer Weg 28 · 24568 Kaltenkirchen · Germany
☎ +49-4191-508-0 · 📠 +49-4191-508-209
contact@wiska.de · www.wiska.com