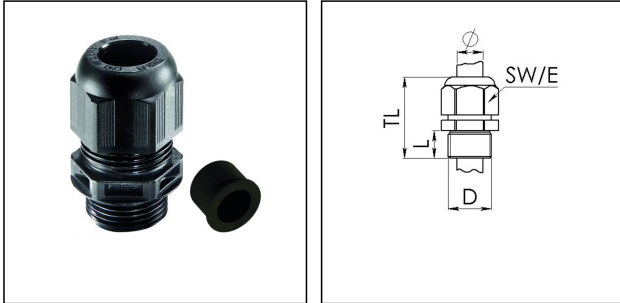


NSKV-RDE 1 1/2

Cable gland with reduction sealing insert, polyamide, NPT 1 1/2", RAL 9005



Product illustrations are exemplary and may differ from the chosen product. Further variants and individual customization, we will gladly provide you on request.



| | |
|---------------------------------|---------------------------|
| Material cable gland | Polyamide |
| Material sealing gasket | EPDM |
| Temp. range min | -40 °C |
| Temp. range max | 100 °C |
| Protection class | IP68 (5 bar 30 min), IP69 |
| Thread type | NPT |
| Ø Connection thread D | 1 1/2" |
| Length screw-in thread L | 18 mm |
| Ø cable diameter min | 16 mm |
| Ø cable diameter max | 35 mm |
| Key width SW | 55 mm |
| Collar diameter (E) | 61 mm |
| Total length TL | 65 mm - 78 mm |
| Glow wire test | 750 °C |
| Type of cable anchorage | A |
| Install. torques cap nut | 30 N m |
| Install. torques fitting | 30 N m |
| Advice | With reduction insert |
| Product Color | RAL 9005 |
| Order no. RAL 9005 | 10101991 |
| Type | NSKV-RDE 1 1/2 |
| Packing unit | 4 |

14.11.2018

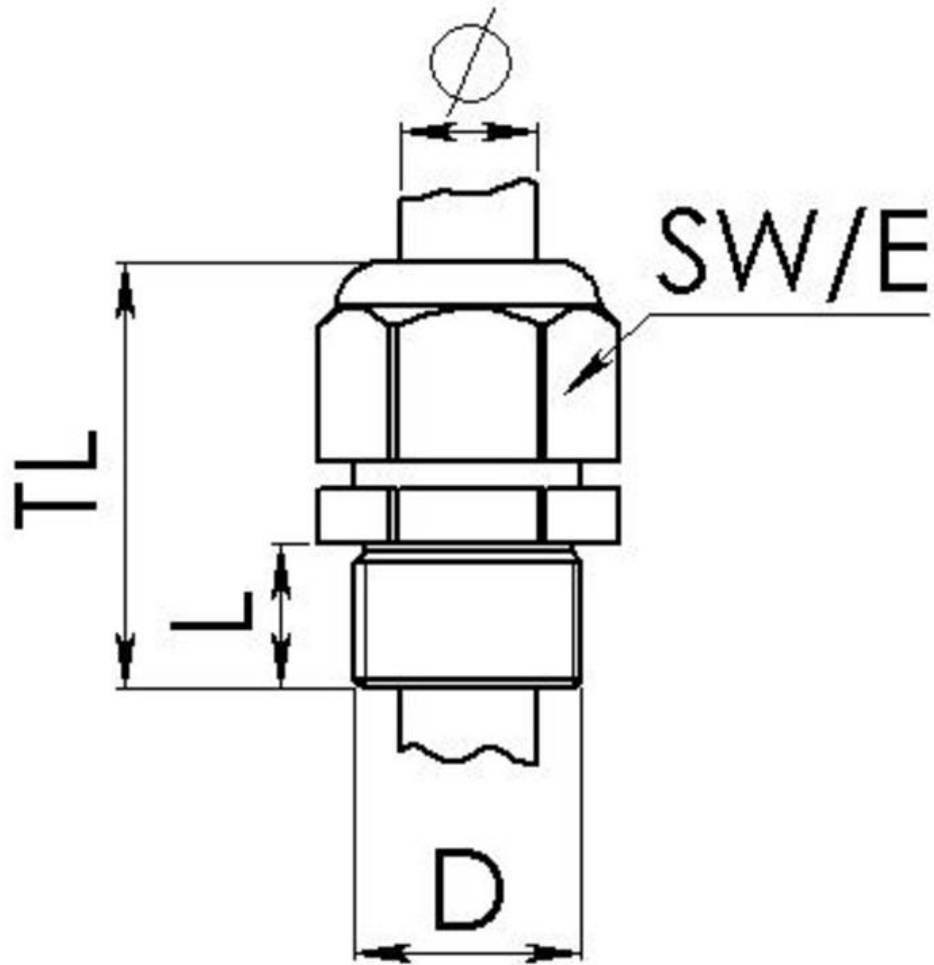
Your Contact:

WISKA Hoppmann GmbH

Kisdorfer Weg 28 · 24568 Kaltenkirchen · Germany

☎ +49-4191-508-0 · 📠 +49-4191-508-209

contact@wiska.de · www.wiska.com



Your Contact:

WISKA Hoppmann GmbH

Kisdorfer Weg 28 · 24568 Kaltenkirchen · Germany

☎ +49-4191-508-0 · 📠 +49-4191-508-209

contact@wiska.de · www.wiska.com